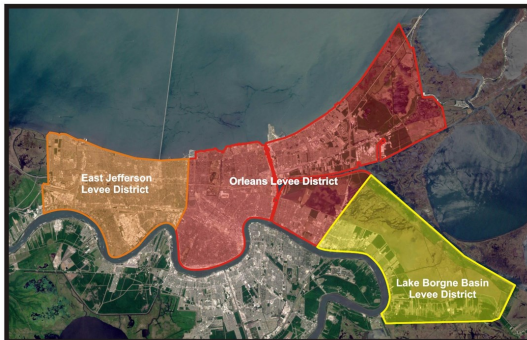


**The Flood Protection Authority's** highest priority is the protection of families, businesses and property from the flooding and structural damage that results from hurricanes and other flood events.

**The Flood Protection Authority** operates and maintains the Hurricane and Storm Damage Risk Reduction System, the Mississippi River and Tributaries levees and floodwalls, and the interior levees protecting the Metropolitan New Orleans area.

**The Flood Protection Authority** is responsible for three active levee districts on the east bank of the Mississippi River: the East Jefferson, Orleans and Lake Borgne Basin Levee Districts.



**The Flood Protection Authority** is continuously working to seek out, investigate, develop and implement new technologies to manage and monitor the world class, state-of-the-art flood protection system, and to construct improvements to reduce residual risks and provide a higher level of protection.

**The Flood Protection Authority** was established after Hurricane Katrina as the regional governmental body responsible for a restored, strengthened and enhanced multi-parish integrated hurricane and flood protection system.

**The Flood Protection Authority** is governed by a nine member Board of Commissioners appointed by the Governor.

**The Flood Protection Authority's** mission is to ensure the physical, operational and financial integrity of the regional flood risk management system, and to work with appropriate local, regional, state and federal agencies and officials to plan, design, construct, operate and maintain projects that will reduce the probability and consequences of flooding in its jurisdiction.

### **SOUTHEAST LOUISIANA FLOOD PROTECTION AUTHORITY-EAST BOARD OF COMMISSIONERS**

**Mark L. Morgan, P.E. - President**

**Roy M. Arrigo - Vice President**

**Clay A. Cosse' - Secretary**

**K. Randall Noel - Treasurer**

**Richard G. Duplantier, Jr.**

**Eugene J. Joanen, IV**

**Jason P. Latiolais**

**Herbert I. Miller, P.E., DEE, F. ASCE**

**Herbert T. Weysham, III**



## **THE FLOOD PROTECTION AUTHORITY**

**6920 Franklin Avenue  
New Orleans, LA 70122  
P 504-286-3100**

**[www.floodauthority.org](http://www.floodauthority.org)**

**f Flood Protection Authority**

# WORKING TOGETHER AS AN INTEGRATED FLOOD PROTECTION SYSTEM

## Mississippi River Levee System

The Mississippi River & Tributaries (MR&T) project was authorized by the 1928 Flood Control Act. Since its inception, the MR&T program has brought an unprecedented degree of protection against riverine flooding. Levees are the backbone of the MR&T project flood control plan.



Mississippi River Levee

## Hurricane and Storm Damage Risk Reduction System (HSDRRS)



IHNC-Lake Borgne Surge Barrier

More than 1 million citizens are better protected from hurricane-driven flooding today than ever before. The \$14.6 billion HSDRRS is comprised of numerous features including levees, floodwalls, floodgates, surge barriers and pump stations, and provides defense against a 100-year storm surge for the citizens of southeast Louisiana, including Orleans, Jefferson and St. Bernard Parishes.

## Coastal Protection and Restoration

A higher level of hurricane and flood protection beyond the 100-year level is achievable through construction and reinforcement of stronger, sustainable levees, floodwalls, floodgates and pumps, as well as advancement of long-term coastal protection and restoration. The Flood Protection Authority will work to secure the future of the Pontchartrain Basin, re-establish self-sustained habitats and enhance storm protection.



MR-GO Rock Dam Channel Closure

# OPERATING AND MAINTAINING COHESIVE REGIONAL FLOOD DEFENSE

The Flood Protection Authority's (FPA) team of dedicated knowledgeable, professional and skilled employees work seamlessly together to ensure the integrity and operation of all features of the flood defense system.

The FPA maintains a total of 191 miles of federal and non-federal riverine and hurricane flood protection levees and floodwalls.



The FPA also operates and maintains 246 land based floodgates, 102 valves, 5.4 miles of seawall, the Permanent Canal Closures and Pumps (PCCP), and eight navigation flood control structures (IHNC Surge Barrier Sector and Barge Gates; Bayou Bienvenue Vertical Lift Gate and Sector Gate; Seabrook Complex; and Bayou Dupre, Bayou St. John and Caernarvon Sector Gates.)

The IHNC-Lake Borgne Surge Barrier is the largest continuous storm surge barrier in the world. The concrete barrier wall is located at the confluence of the MRGO and GIWW and stretches 1.8 miles across the Golden Triangle Marsh. The FPA is responsible for the operation and maintenance of the surge barrier and the navigational gates that are a part of the flood defense system.

